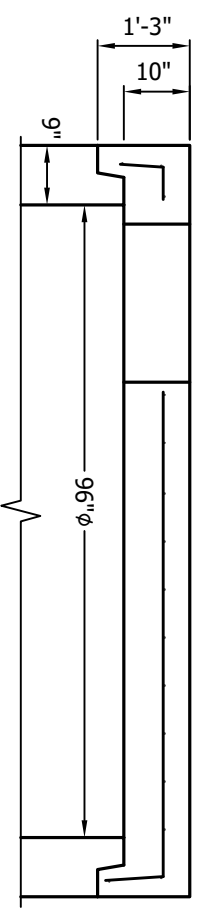
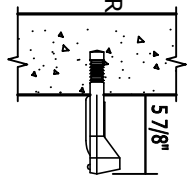


FRAME & GRATE, MASONRY ADJUSTMENT TO GRADE BY CONTRACTOR IN THE FIELD.



ROOF SLAB REINFORCING DESIGNED TO WITHSTAND HS25 LOADING.

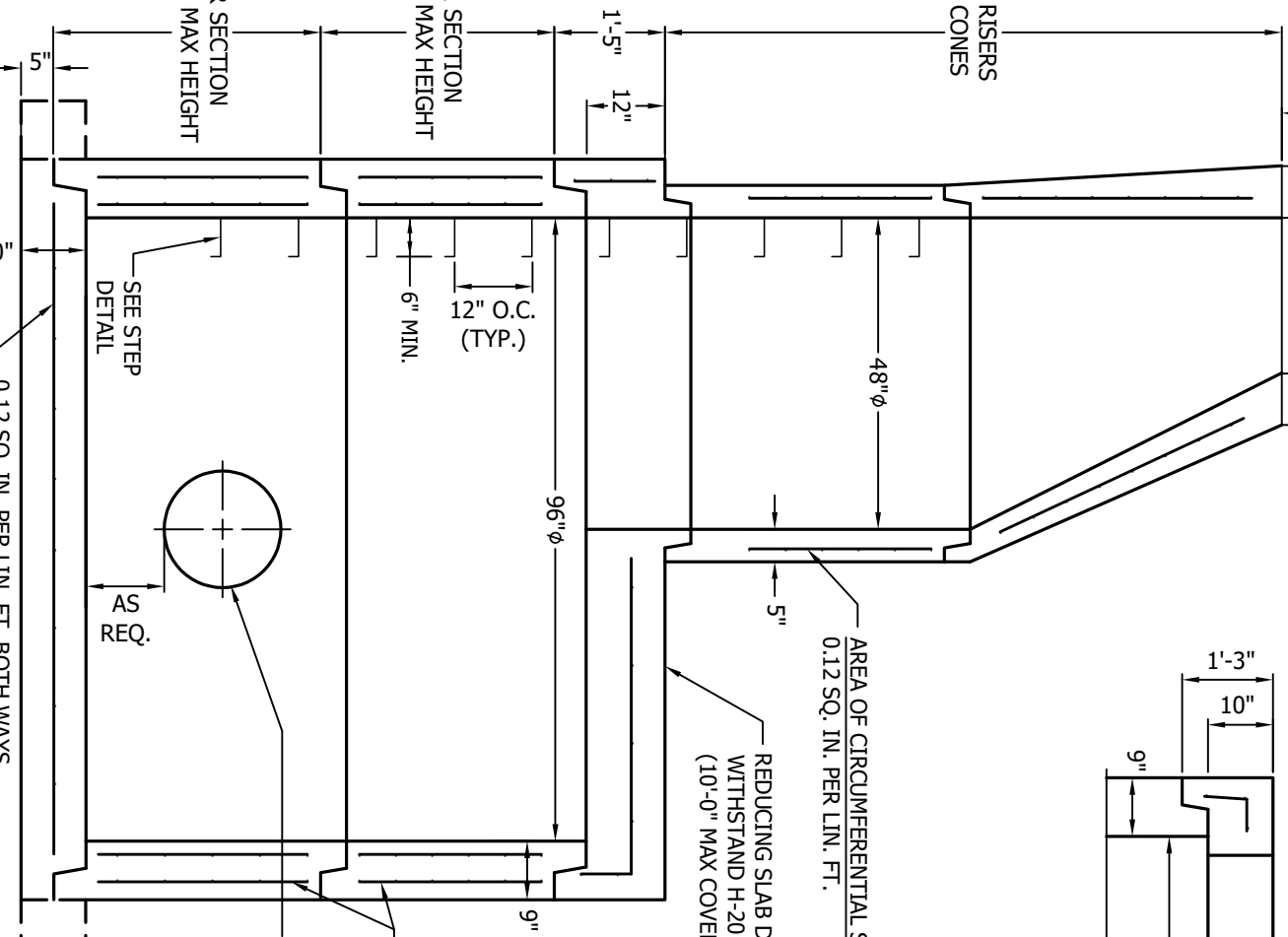
MA INDUSTRIES MODEL #PS2-PF STEEL REINFORCED COPOLYMER POLYPROPYLENE PLASTIC STEP (OR EQUAL) PER ASTM D2146 TYPE II, GRADE 16906.



STEP DETAIL

REDUCING SLAB DESIGNED TO WITHSTAND H-20 LOADING (10'-0" MAX COVER TO GRADE)

AREA OF CIRCUMFERENTIAL STEEL 0.12 SQ. IN. PER LIN. FT.

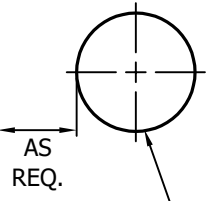


AREA OF CIRCUMFERENTIAL STEEL 0.12 SQ. IN. PER LIN. FT.

EITHER OVERSIZED HOLES OR SPECIAL CONNECTIONS CAST INTO WALLS, ANGLE AND ELEVATION TO SUIT.

BASE EXTENSION AS NEEDED FOR BUOYANCY

SEE STEP DETAIL



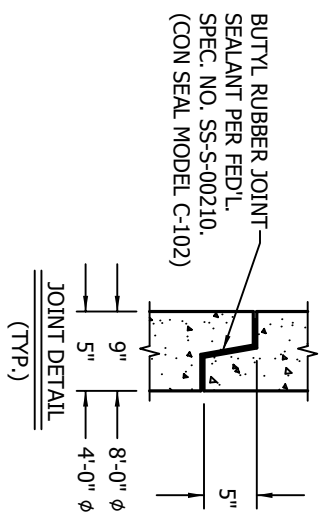
AS REQ.

0.12 SQ. IN. PER LIN. FT. BOTH WAYS

SECTION VIEW

3/8" = 1'-0"

WEIGHT: #



NOTES:

- 1) CONCRETE TO TEST 4000 PSI AT 28 DAYS.
- 2) ALL MATERIAL IN STRICT COMPLIANCE WITH ASTM C478, LATEST REVISION.
- 3) MAX TWO (2) LIFTING HOLES IN EACH SECTION TO FACILITATE HANDLING.
- 4) ALL COMPONENTS ARE MANUFACTURED IN ACCORDANCE WITH NVSDOT SPECIFICATIONS.



276 Grove Road
Salisbury Mills, New York, 12577
www.aarconcrete.com
845-562-0640

DATE: 8/21/2024

96φ MANHOLE

DWN.BY: A&R LLC

CONTRACTOR: ---

DWG. NO.: 96MH