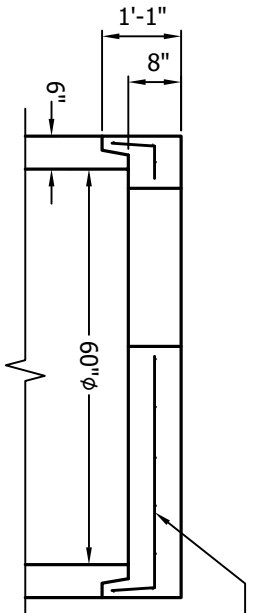
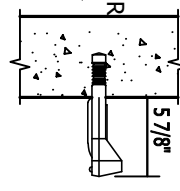


FRAME & GRATE, MASONRY ADJUSTMENT TO GRADE BY CONTRACTOR IN THE FIELD.



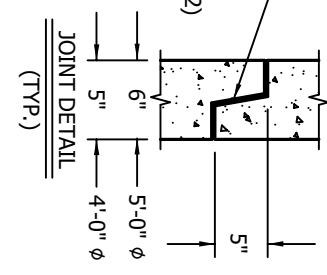
ROOF SLAB REINFORCING DESIGNED TO WITHSTAND H-20 LOADING.

MA INDUSTRIES MODEL #PS2-PF STEEL REINFORCED COPOLYMER POLYPROPYLENE PLASTIC STEP (OR EQUAL) PER ASTM D2146 TYPE II, GRADE 16906.



STEP DETAIL

BUTYL RUBBER JOINT SEALANT PER FED'L SPEC. NO. SS-S-00210, (CON SEAL MODEL C-102)



NOTES:

- 1) CONCRETE TO TEST 4000 PSI AT 28 DAYS.
- 2) ALL MATERIAL IN STRICT COMPLIANCE WITH ASTM C478, LATEST REVISION.
- 3) MAX TWO (2) LIFTING HOLES IN EACH SECTION TO FACILITATE HANDLING.
- 4) ALL COMPONENTS ARE MANUFACTURED IN ACCORDANCE WITH NVSDOT SPECIFICATIONS.

A&R
CONCRETE PRODUCTS

276 Grove Road
Salisbury Mills, New York, 12577
www.aarconcrete.com
845-562-0640

CONTRACTOR:	---	DWG. NO.:	60MH
DATE:	8/21/2024	REV.:	---
DWN. BY:	A&R LLC		
60φ MANHOLE			

WEIGHT: #

SECTION VIEW
3/8" = 1'-0"

SECTION VIEW
0.15 SQ. IN. PER LIN. FT. BOTH WAYS