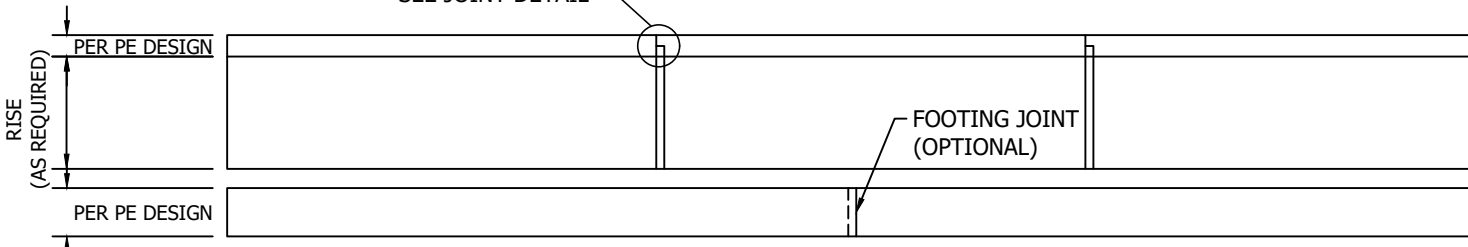
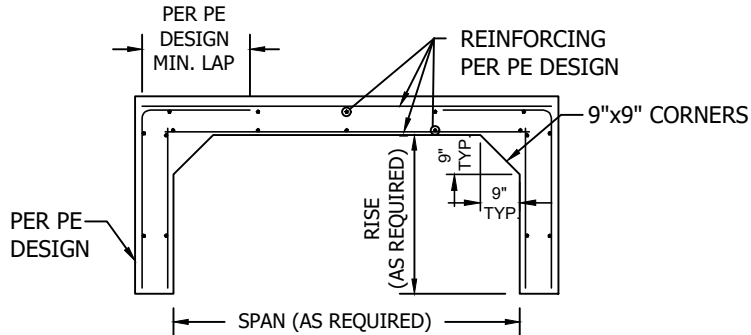


PLAN
NTS

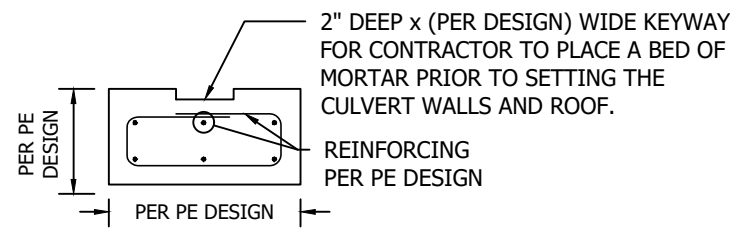
SEE JOINT DETAIL



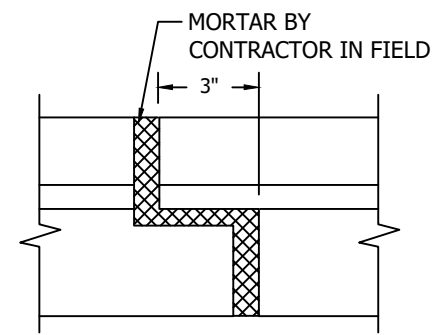
SECTION A-A
NTS



SECTION B-B
NTS



FOOTING DETAIL
NTS




JOINT DETAIL
NTS

NOTES:

- 1) CONTACT A&R CONCRETE PRODUCTS FOR CUSTOM SIZES.
- 2) CONCRETE TO TEST 5,000 PSI AT 28 DAYS.
- 3) DESIGN MEETS OR EXCEEDS ASTM C789 OR ASTM C850 OR AS SPECIFIED.
- 4) REINFORCING STEEL PER ASTM A615, GRADE 60 - BLACK BARS, 2" COVER MIN. TOP SLAB (O.F.); 1" COVER MIN. OVER REST OF STEEL.
- 5) DESIGN LOAD AASHTO HS20 OR AS SPECIFIED.
- 6) CULVERT TO BE SUPPLIED WITH DRAW BOLTS AND JOINT SEALANT AS REQUIRED.
- 7) PIECE LENGTHS VARY DEPENDING ON LIFTING WEIGHTS OF EACH SECTION.

WEIGHT
____ POUNDS

	276 Clove Road Salisbury Mills, New York, 12577 www.arconcrete.com 845-562-0640	
	3-SIDED BOX CULVERT W/ FOOTINGS	DATE: 8/31/2022
CONTRACTOR: ---		REV.: ---
		DWN.BY: A&R LLC
		DWG. NO.: 3SDBC