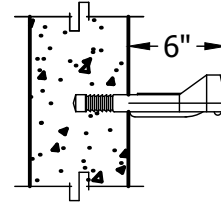
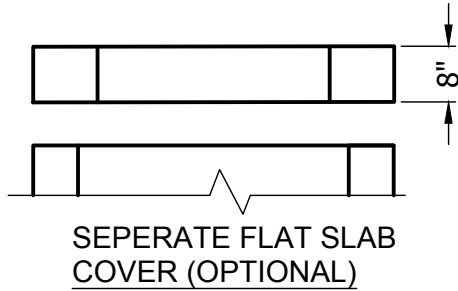




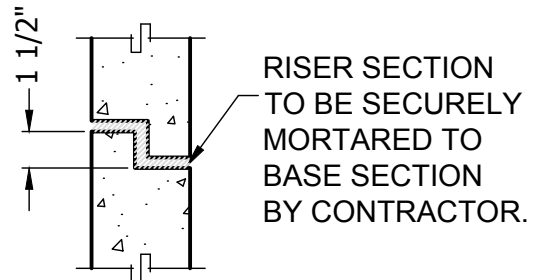
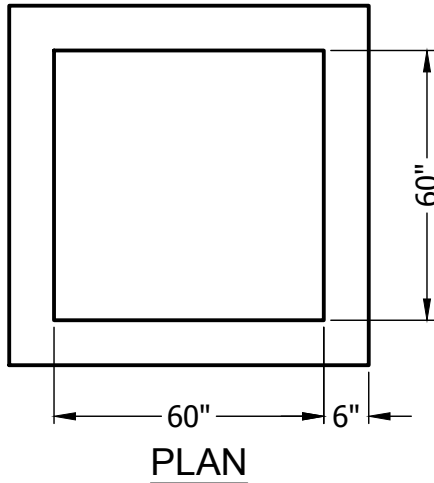
7 Ruscitti Road
 New Windsor, New York, 12553
 www.arconcrete.com
 845-562-0640

60" x 60" CB

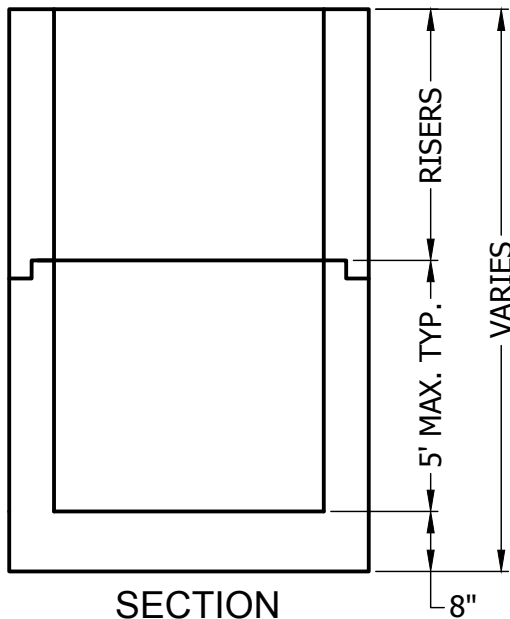


STEP DETAIL

MA INDUSTRIES MODEL #PS2-PF
 STEEL REINFORCED COPOLYMER
 POLYPROPYLENE PLASTIC STEP.



WALL JOINT DETAIL (WHEN REQUIRED)



- * Concrete to test 4000 PSI at 28 days.
- * All components are designed to withstand AASHTO HS-20 loading.
- * Cover slabs available.
- * Pipe openings, size and location, as specified.
- * Frames and grates available upon request.

Drawing 6060CB