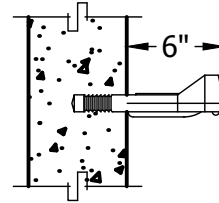
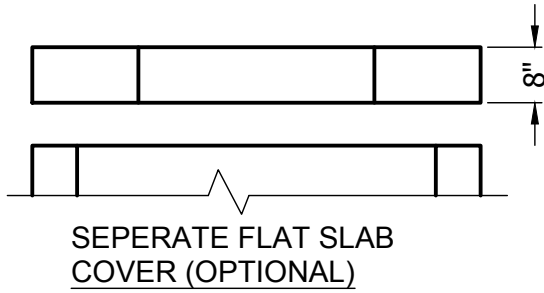
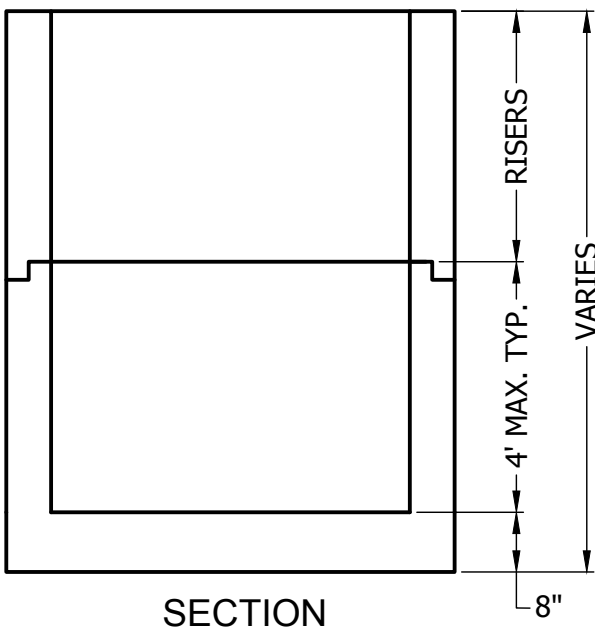
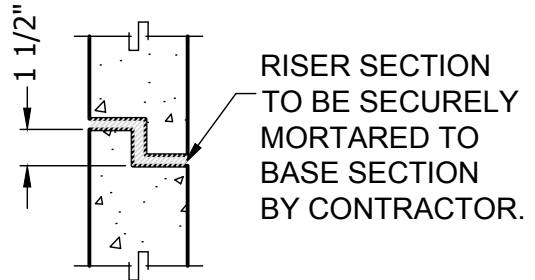
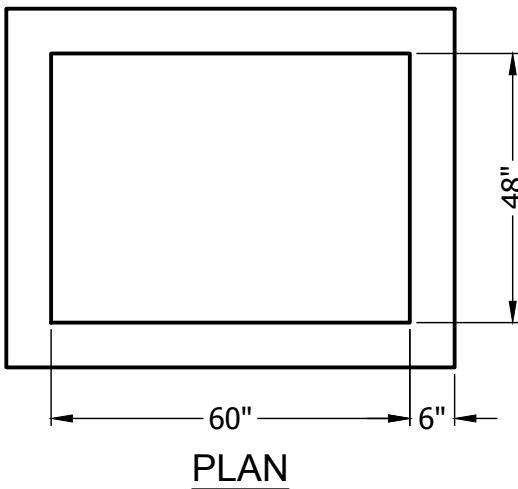


# 48" x 60" CB



## STEP DETAIL

MA INDUSTRIES MODEL #PS2-PF  
STEEL REINFORCED COPOLYMER  
POLYPROPYLENE PLASTIC STEP.



## WALL JOINT DETAIL (WHEN REQUIRED)

- \* Concrete to test 4000 PSI at 28 days.
- \* All components are designed to withstand AASHTO HS-20 loading.
- \* Cover slabs available.
- \* Pipe openings, size and location, as specified.
- \* Frames and grates available upon request.