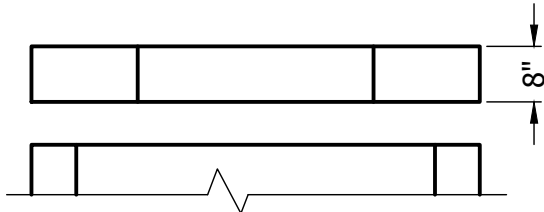


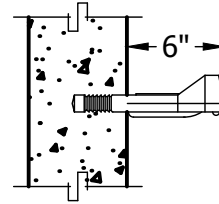


7 Ruscitti Road
 New Windsor, New York, 12553
 www.arconcrete.com
 845-562-0640

48" x 54" CB

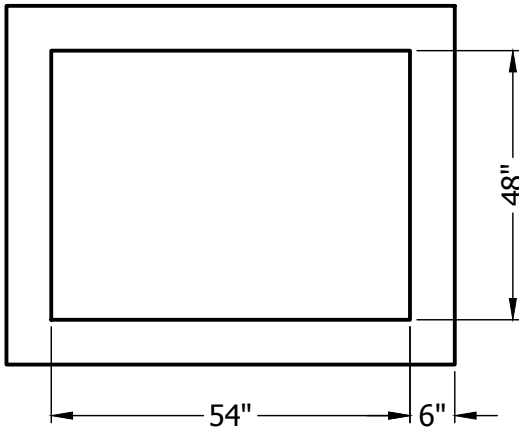


SEPERATE FLAT SLAB
 COVER (OPTIONAL)

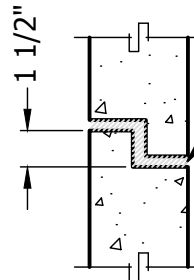


STEP DETAIL

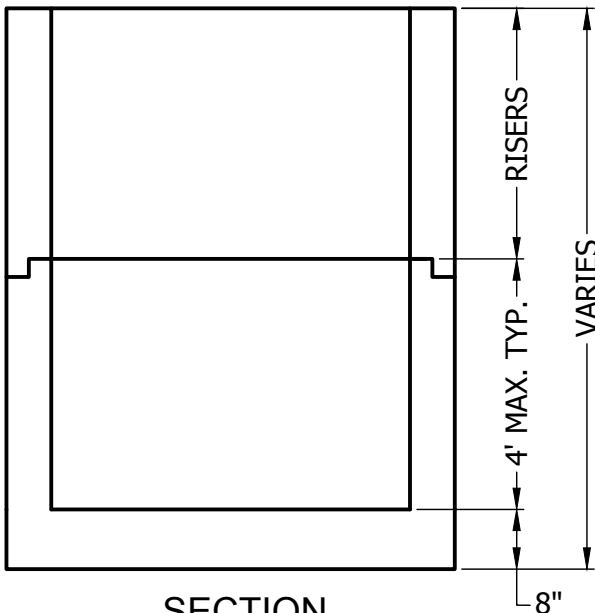
MA INDUSTRIES MODEL #PS2-PF
 STEEL REINFORCED COPOLYMER
 POLYPROPYLENE PLASTIC STEP.



PLAN



RISER SECTION
 TO BE SECURELY
 MORTARED TO
 BASE SECTION
 BY CONTRACTOR.



SECTION

WALL JOINT DETAIL (WHEN REQUIRED)

- * Concrete to test 4000 PSI at 28 days.
- * All components are designed to withstand AASHTO HS-20 loading.
- * Cover slabs available.
- * Pipe openings, size and location, as specified.
- * Frames and grates available upon request.

Drawing 4854CB