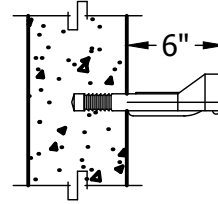
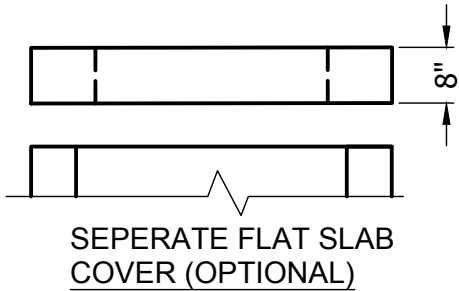




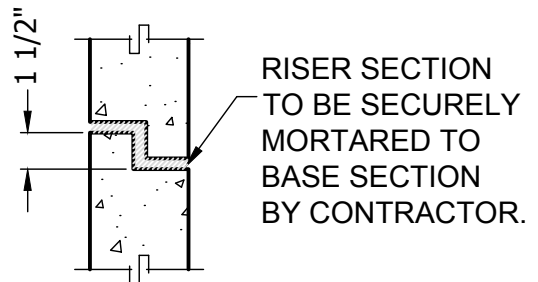
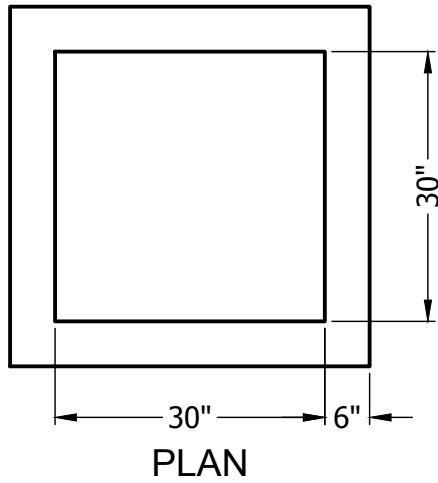
7 Ruscitti Road  
 New Windsor, New York, 12553  
 www.arconcrete.com  
 845-562-0640

# 30" x 30" CB

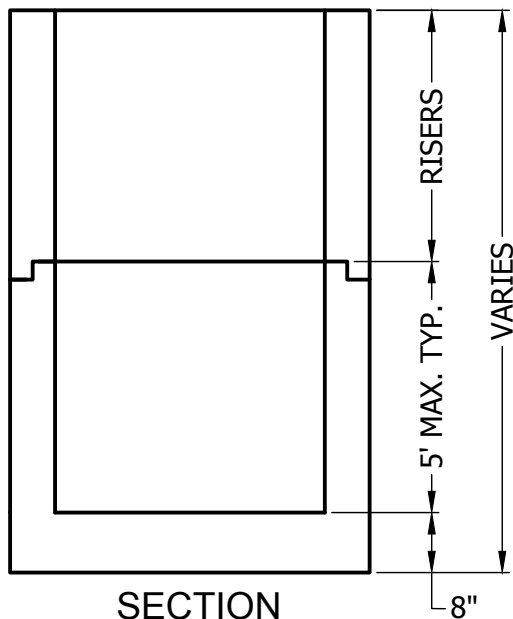


## STEP DETAIL

MA INDUSTRIES MODEL #PS2-PF  
 STEEL REINFORCED COPOLYMER  
 POLYPROPYLENE PLASTIC STEP.



## WALL JOINT DETAIL (WHEN REQUIRED)



- \* Concrete to test 4000 PSI at 28 days.
- \* All components are designed to withstand AASHTO HS-20 loading.
- \* Cover slabs available.
- \* Pipe openings, size and location, as specified.
- \* Frames and grates available upon request.

Drawing 3030CB