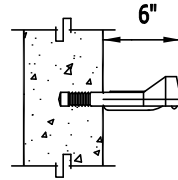
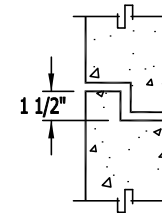


PLAN

MA INDUSTRIES MODEL# PS2-PF  
STEEL REINFORCED COPOLYMER  
POLYPROPYLENE PLASTIC STEP

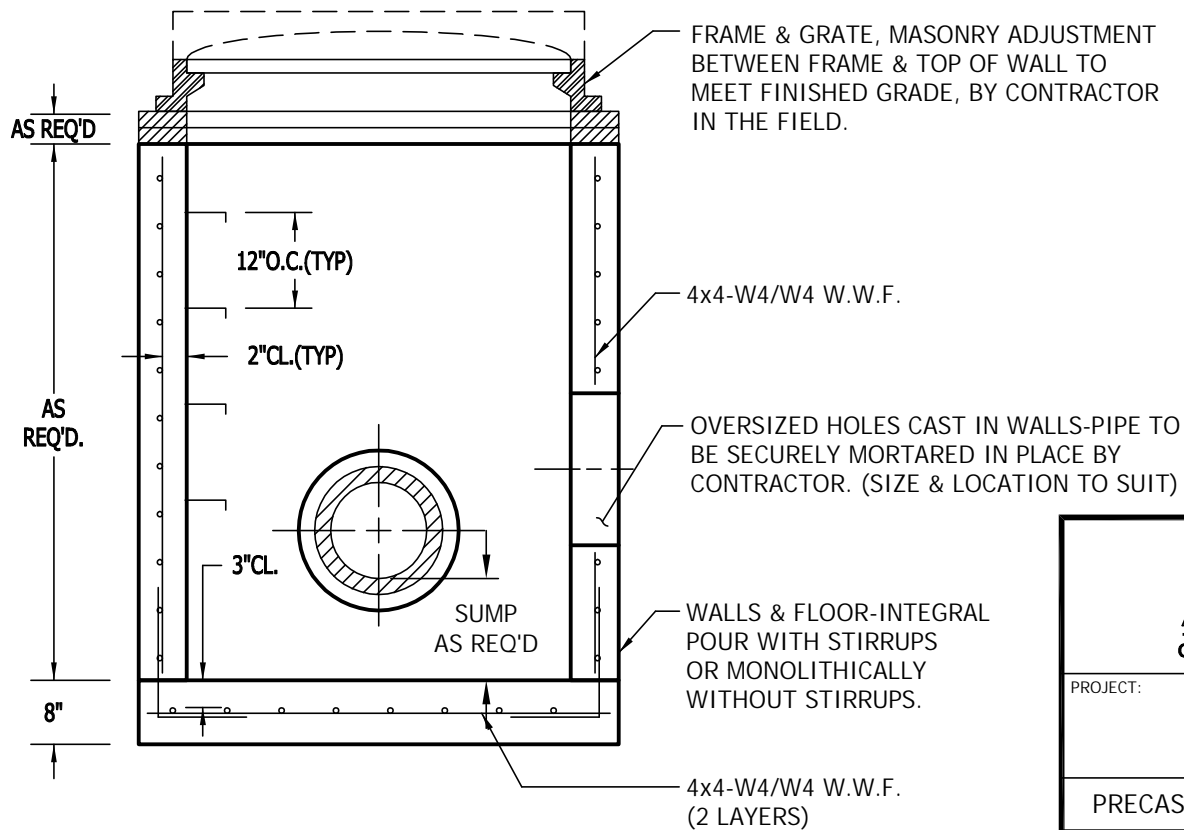


STEP DETAIL



RISER SECTION TO BE  
SECURELY MORTARED  
TO BASE SECTION  
BY CONTRACTOR.

WALL JOINT DETAIL  
(WHEN REQUIRED)



SECTION

NOTES:

- 1) CONCRETE TO TEST 4000 PSI AT 28 DAYS.
- 2) ALL COMPONENTS ARE DESIGNED TO WITHSTAND AASHTO HS-20 LOADING.
- 3) ALL MATERIALS ARE IN CONFORMANCE WITH N.Y.S.D.O.T. SPECIFICATIONS AND MATERIALS.



7 Ruscitti Road  
New Windsor, New York, 12553  
www.arconcrete.com  
845-562-0640

PROJECT:	DATE:
	REV.:
PRECAST CONCRETE CATCH BASIN ID 24"x36"	DWN.BY: AR LLC
CONTRACTOR:	DWG. NO.: