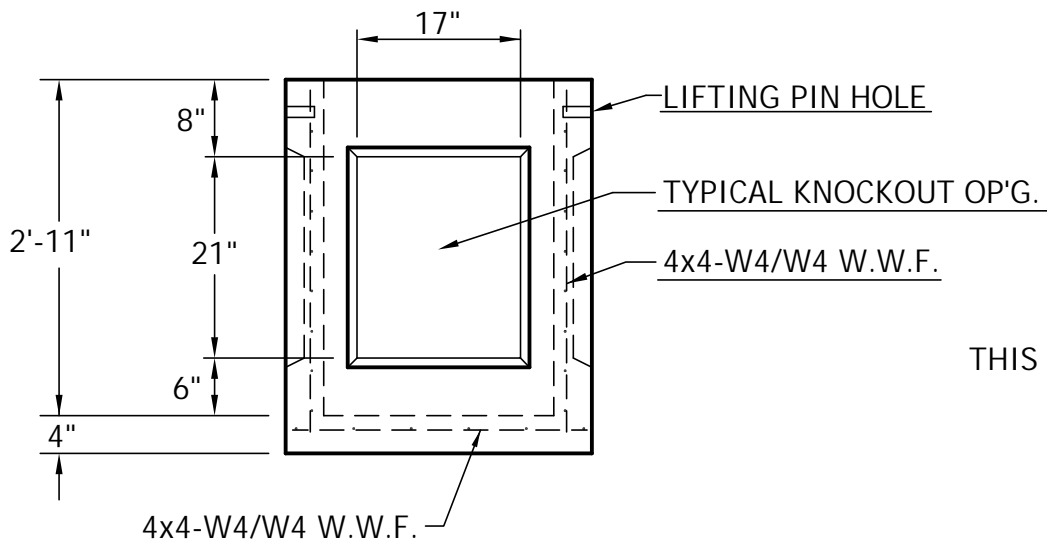


PLAN

NOTES:

1. CONCRETE TO TEST 5,000 PSI AT 28 DAYS.
2. REINFORCING STEEL PER ASTM A185 FOR WELDED WIRE FABRIC.
3. FRAMES AND COVERS/GRATES ARE AVAILABLE UPON REQUEST.



ELEVATION

THIS "KO" CB IS NOT DESIGNED TO WITHSTAND H-20 LOADING.



7 Ruscitti Road
New Windsor, New York, 12553
www.arconcrete.com
845-562-0640

24"x24" SQ. CATCH BASIN KNOCKOUT	DATE:
	REV.:
	DWN.BY:
	DWG. NO.:
CONTRACTOR:	